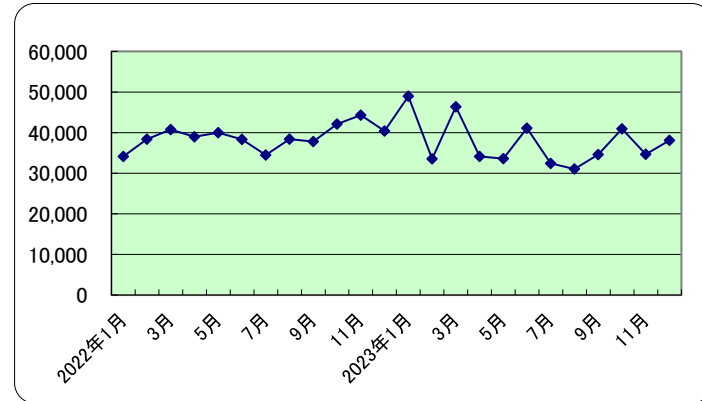
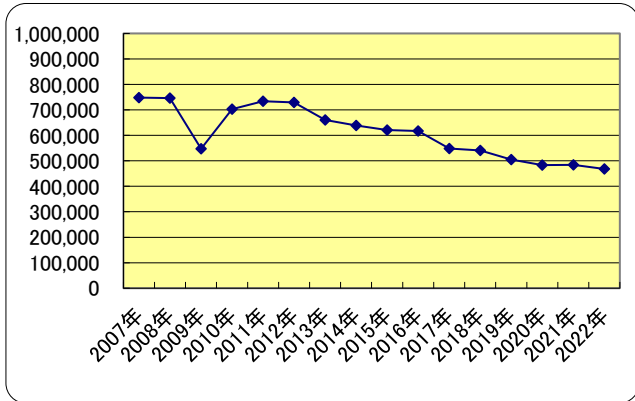


# 金型生産実績（数量）

「機械統計」出所:経済産業省

注)右欄は内製分(単位:組)

	プレス型		鍛造型		鋳造型		ダイカスト型		プラスチック型		ガラス型		ゴム型		粉末冶金型		合計	累計
2007年	152,141	41,814	139,582	40,042	7,615	1,852	11,459	2,008	50,443	8,241	302,878		13,171	1,502	70,930	6,328	748,219	101,771
2008年	150,938	40,649	146,690	38,750	7,355	913	10,158	1,608	47,545	7,644	295,445		12,168	1,179	75,515	14,028	745,814	104,771
2009年	92,695	26,030	84,723	22,608	4,992	542	7,536	1,122	35,656	5,847	264,015	4,655	7,771	920	49,817	8,831	547,205	70,555
2010年	124,494	25,866	119,956	30,188	5,101	764	8,521	1,619	39,325	6,082	335,987	2,600	8,649	833	61,258	10,883	703,291	78,835
2011年	131,580	23,828	111,801	31,067	6,608	729	8,871	1,335	35,227	5,937	362,557		8,061	755	69,153	11,392	733,858	75,043
2012年	127,886	26,565	142,281	32,705	6,404	691	9,265	1,411	37,216	6,592	330,052		7,990	665	67,801	12,499	728,895	81,128
2013年	123,301	28,010	138,469	30,396	5,703	611	8,478	1,486	35,172	6,440	274,514		8,004	1,044	66,821	13,598	660,462	81,585
2014年	120,536	26,997	141,519	31,097	5,013	644	8,161	1,747	37,426	6,785	253,350		6,687	869	65,791	13,123	638,483	81,262
2015年	120,796	30,850	124,508	31,175	5,059	522	8,981	1,865	36,306	6,761	244,385		14,839	2,423	66,315	10,596	621,189	84,192
2016年	114,552	28,338	120,314	33,012	5,127	577	9,258	2,244	41,307	6,550	249,292		15,430	2,725	61,984	9,357	617,264	82,803
2017年	118,184	30,173	112,384	34,188	4,909	507	9,558	2,073	39,216	7,003	185,550		15,013	2,683	63,333	8,692	548,147	85,319
2018年	109,872	32,155	112,684	33,973	5,221	580	8,483	1,999	32,093	6,130	190,188		15,467	2,367	67,136	7,956	541,144	85,160
2019年	102,447	24,758	106,985	33,150	4,769	502	8,063	1,913	30,476	5,839	172,631		15,273	2,140	64,742	7,923	505,386	76,225
2020年	85,476	23,896	76,116	24,076	3,989	513	6,734	1,480	29,686	5,367	215,153		12,043	1,760	54,246	6,116	483,443	63,208
2021年	84,538	20,381	111,374	31,345	3,992	380	7,311	1,624	28,523	5,237	191,538		12,688	1,828	44,313	6,014	484,277	66,809
2022年	89,722	25,782	111,131	32,686	3,589	395	7,153	1,549	27,679	4,885	183,533		12,353	1,456	32,927	4,667	468,087	71,420
2022年1月	6,681	2,357	8,663	2,602	281	30	590	140	2,220	381	12,157		1,041	136	2,511	352	34,144	5,998
2月	6,598	1,649	9,365	2,648	318	46	547	118	2,026	365	15,321		1,256	111	2,961	416	38,392	5,353
3月	8,046	2,517	10,509	2,973	340	35	675	175	2,607	527	14,103		1,188	122	3,289	521	40,757	6,870
4月	7,598	2,084	9,892	2,725	260	30	618	133	2,348	379	14,329		1,128	121	2,809	422	38,982	5,894
5月	7,632	2,126	8,409	2,307	267	27	564	106	2,028	349	17,617		928	106	2,519	329	39,964	5,350
6月	6,959	1,773	9,183	2,846	260	35	665	141	2,281	414	15,105		1,029	92	2,863	327	38,345	5,628
7月	7,773	2,382	8,644	2,858	252	24	594	137	2,370	449	11,197		934	109	2,729	373	34,493	6,332
8月	6,637	1,671	7,905	2,295	280	26	571	124	2,174	382	17,191		817	109	2,794	446	38,369	5,053
9月	8,310	3,171	9,196	2,794	337	31	575	133	2,291	402	13,255		1,057	128	2,761	386	37,782	7,045
10月	8,079	2,067	10,077	2,915	289	34	586	108	2,248	399	16,863		1,167	196	2,824	345	42,133	6,064
11月	7,148	1,893	9,622	3,019	331	44	621	108	2,427	417	20,687		1,023	126	2,453	389	44,312	5,996
12月	8,261	2,092	9,666	2,704	374	33	547	126	2,659	421	15,708		785	100	2,414	361	40,414	5,837
2023年1月	6,491	2,035	8,379	2,296	241	32	577	111	1,992	286	27,753		866	120	2,654	337	48,953	5,217
2月	5,434	1,554	9,731	2,507	310	39	522	90	2,120	391	11,883		1,020	104	2,549	378	33,569	5,063
3月	6,903	1,882	10,484	2,829	368	50	685	153	2,693	447	21,024		1,103	145	3,103	601	46,363	6,107
4月	5,211	1,619	8,793	2,695	280	31	535	112	2,094	355	13,728		915	109	2,592	482	34,148	5,403
5月	4,938	1,792	8,938	2,432	282	19	537	123	2,179	306	13,461		802	111	2,475	356	33,612	5,139
6月	4,756	1,727	9,902	2,969	288	36	557	136	2,994	362	19,496		831	134	2,276	355	41,100	5,719
7月	4,369	1,546	9,343	2,767	281	40	484	97	1,957	425	12,292		892	115	2,782	436	32,400	5,426
8月	4,980	2,235	9,342	2,375	201	37	477	116	1,817	260	10,943		773	115	2,506	393	31,039	5,531
9月	5,057	1,348	9,916	2,646	293	50	474	128	2,099	346	12,999		888	118	2,859	396	34,585	5,032
10月	4,974	1,709	10,010	2,798	322	34	537	147	2,032	287	19,377		1,094	182	2,593	444	40,939	5,601
11月	5,474	2,119	10,670	3,029	349	26	532	124	1,953	345	11,984		1,095	123	2,597	405	34,654	6,171
12月	5,704	2,328	9,200	2,797	350	42	472	111	2,405	423	16,703		803	114	2,480	326	38,117	6,141



(注) は、令和5年「機械統計年報」(2023年6月公表)により訂正のあったもの

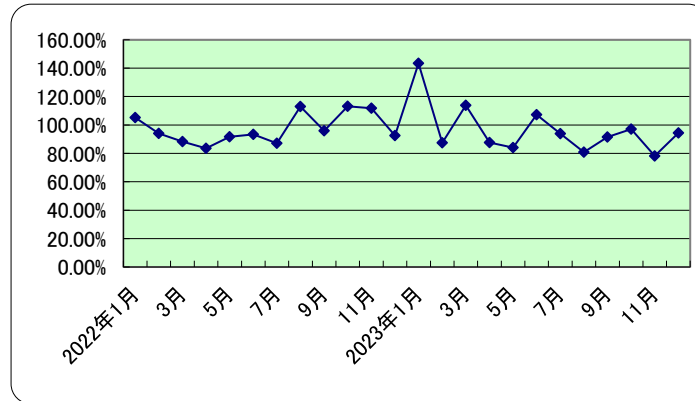
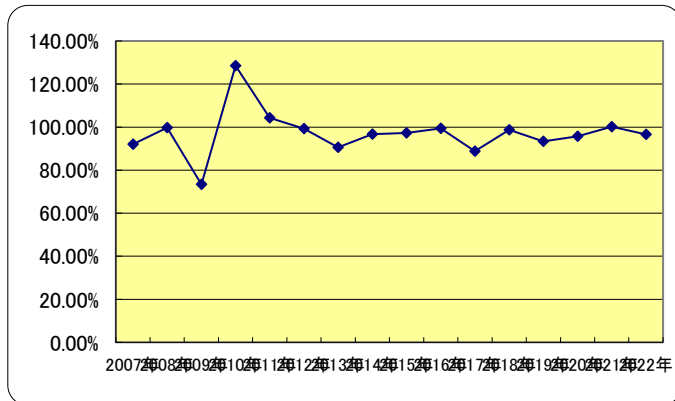
一般社団法人 日本金型工業会

# 金型生産実績（数量）

「機械統計」（対前年比）

注）右欄は内製分（単位：％）

	プレス型		鍛造型		鋳造型		ダイカスト型		プラスチック型		ガラス型		ゴム型		粉末冶金型		合計	
2007年	89.32%	82.68%	94.51%	89.84%	96.64%	159.24%	94.81%	101.67%	93.96%	95.95%	89.89%		100.72%	104.52%	99.10%	86.67%	92.00%	88.04%
2008年	99.21%	97.21%	105.09%	96.77%	96.59%	49.30%	88.65%	80.08%	94.25%	92.76%	97.55%		92.38%	78.50%	106.46%	221.68%	99.68%	102.93%
2009年	61.41%	64.04%	57.76%	58.34%	67.87%	59.36%	74.19%	69.78%	74.99%	76.49%	89.36%		63.86%	78.03%	65.97%	62.95%	73.37%	67.34%
2010年	134.30%	99.37%	141.59%	133.53%	102.18%	140.96%	113.07%	144.30%	110.29%	104.02%	127.26%	55.85%	111.30%	90.54%	122.97%	123.24%	128.52%	111.74%
2011年	105.68%	92.12%	93.20%	102.91%	129.54%	95.42%	104.11%	82.46%	89.58%	97.62%	107.91%		93.20%	90.64%	112.89%	104.68%	104.35%	95.19%
2012年	97.19%	111.49%	127.26%	105.27%	96.91%	94.79%	104.44%	105.69%	105.65%	111.03%	91.03%		99.12%	88.08%	98.04%	109.72%	99.32%	108.11%
2013年	96.41%	105.44%	97.32%	92.94%	89.05%	88.42%	91.51%	105.32%	94.51%	97.69%	83.17%		100.18%	156.99%	98.55%	108.79%	90.61%	100.56%
2014年	97.76%	96.38%	102.20%	102.31%	87.90%	105.40%	96.26%	117.56%	106.41%	105.36%	92.29%		83.55%	83.24%	98.46%	96.51%	96.67%	99.60%
2015年	100.22%	114.27%	87.98%	100.25%	100.92%	81.06%	110.05%	106.75%	97.01%	99.65%	96.46%		221.91%	278.83%	100.80%	80.74%	97.29%	103.61%
2016年	94.83%	91.86%	96.63%	105.89%	101.34%	110.54%	103.08%	120.32%	113.77%	96.88%	102.01%		103.98%	112.46%	93.47%	88.31%	99.37%	98.35%
2017年	103.17%	106.48%	93.41%	103.56%	95.75%	87.87%	103.24%	92.38%	94.94%	106.92%	74.43%		97.30%	98.46%	102.18%	92.89%	88.80%	103.04%
2018年	92.97%	106.57%	100.27%	99.37%	106.36%	114.40%	88.75%	96.43%	81.84%	87.53%	102.50%		103.02%	88.22%	106.00%	91.53%	98.72%	99.81%
2019年	93.24%	77.00%	94.94%	97.58%	91.34%	86.55%	95.05%	95.70%	94.96%	95.25%	90.77%		98.75%	90.41%	96.43%	99.59%	93.36%	89.51%
2020年	83.43%	96.52%	71.15%	72.63%	83.64%	102.19%	83.52%	77.37%	97.41%	91.92%	124.63%		78.85%	82.24%	83.79%	77.19%	95.66%	82.92%
2021年	98.90%	85.29%	146.32%	130.19%	100.08%	74.07%	108.57%	109.73%	96.08%	97.58%	89.02%		105.36%	103.86%	81.69%	98.33%	100.17%	105.70%
2022年	106.13%	126.50%	99.78%	104.28%	89.90%	103.95%	97.84%	95.38%	97.04%	93.28%	95.82%		97.36%	79.65%	74.31%	77.60%	96.66%	106.90%
2022年1月	112.47%	158.83%	97.90%	103.67%	84.64%	130.43%	110.28%	129.63%	86.99%	76.97%	113.33%		106.99%	105.43%	98.43%	79.64%	105.19%	115.55%
2月	106.97%	106.87%	104.59%	107.03%	88.58%	124.32%	96.81%	100.00%	89.57%	93.35%	86.32%		139.25%	91.74%	76.57%	86.13%	94.04%	103.60%
3月	94.28%	113.28%	98.73%	93.37%	87.86%	106.06%	97.12%	101.16%	93.47%	97.23%	79.48%		108.30%	112.96%	77.50%	97.20%	88.34%	101.06%
4月	109.18%	126.84%	103.86%	99.60%	83.87%	166.67%	104.22%	91.10%	104.22%	83.30%	64.89%		102.55%	93.80%	72.62%	85.25%	83.49%	104.84%
5月	116.09%	150.57%	96.54%	98.30%	97.09%	135.00%	111.90%	117.78%	96.80%	82.70%	86.79%		91.88%	100.95%	61.04%	87.04%	91.68%	112.07%
6月	102.19%	105.04%	87.54%	95.31%	82.54%	159.09%	109.38%	106.02%	95.16%	92.41%	96.51%		89.56%	54.44%	79.02%	58.71%	93.42%	93.75%
7月	106.63%	156.92%	89.30%	100.85%	83.72%	109.09%	90.41%	99.28%	104.91%	119.10%	74.79%		78.03%	84.50%	84.31%	69.33%	87.12%	113.97%
8月	92.08%	108.65%	95.73%	104.32%	85.37%	118.18%	94.85%	79.49%	104.72%	113.69%	148.87%		87.57%	50.23%	92.24%	114.36%	112.91%	103.99%
9月	106.04%	168.13%	95.07%	116.51%	108.36%	75.61%	90.55%	81.10%	98.71%	87.01%	104.09%		96.35%	92.75%	57.66%	71.22%	95.90%	125.11%
10月	121.76%	99.95%	114.72%	127.57%	83.29%	62.96%	88.12%	73.47%	98.42%	99.01%	119.30%		105.80%	77.17%	86.12%	83.33%	113.16%	107.80%
11月	100.68%	112.21%	103.64%	112.27%	94.84%	102.33%	97.49%	96.43%	100.79%	103.47%	145.58%		92.25%	80.77%	54.31%	55.41%	111.86%	103.52%
12月	110.40%	123.64%	113.40%	100.07%	98.94%	73.33%	88.94%	90.65%	94.06%	83.70%	79.78%		77.11%	57.80%	75.84%	67.23%	92.45%	100.79%
2023年1月	97.16%	86.34%	96.72%	88.24%	85.77%	106.67%	97.80%	79.29%	89.73%	75.07%	228.29%		83.19%	88.24%	105.69%	95.74%	143.37%	86.98%
2月	82.36%	94.24%	103.91%	94.68%	97.48%	84.78%	95.43%	76.27%	104.64%	107.12%	77.56%		81.21%	93.69%	86.09%	90.87%	87.44%	94.58%
3月	85.79%	74.77%	99.76%	95.16%	108.24%	142.86%	101.48%	87.43%	103.30%	84.82%	149.07%		92.85%	118.85%	94.34%	115.36%	113.75%	88.89%
4月	68.58%	77.69%	88.89%	98.90%	103.33%	86.57%	84.21%	89.18%	109.45%	93.67%	95.81%		81.12%	90.08%	92.27%	114.22%	87.60%	91.67%
5月	64.70%	84.29%	106.29%	105.42%	105.62%	70.37%	95.21%	116.04%	107.18%	87.68%	76.41%		86.42%	104.72%	98.25%	108.21%	84.11%	96.06%
6月	68.34%	97.41%	107.83%	104.32%	110.77%	102.86%	83.76%	96.45%	131.26%	87.44%	129.07%		80.76%	145.65%	79.50%	108.56%	107.18%	101.62%
7月	56.21%	64.90%	108.09%	96.82%	111.51%	166.67%	81.48%	70.80%	82.57%	94.65%	109.78%		95.50%	105.50%	101.94%	116.89%	93.93%	85.69%
8月	75.03%	133.75%	118.18%	103.49%	71.79%	142.31%	83.54%	93.55%	83.58%	68.06%	63.66%		94.61%	105.50%	89.69%	88.12%	80.90%	109.46%
9月	60.85%	42.51%	107.83%	94.70%	86.94%	161.29%	82.43%	96.24%	91.62%	86.07%	98.07%		84.01%	92.19%	103.55%	102.59%	91.54%	71.43%
10月	61.57%	82.68%	99.34%	95.99%	111.42%	100.00%	91.64%	136.11%	90.39%	71.93%	114.91%		93.74%	92.86%	91.82%	128.70%	97.17%	92.36%
11月	76.58%	111.94%	110.89%	100.33%	105.44%	59.09%	85.67%	114.81%	80.47%	82.73%	57.93%		107.04%	97.62%	105.87%	104.11%	78.20%	102.92%
12月	69.05%	111.28%	95.18%	103.44%	93.58%	127.27%	86.29%	88.10%	90.45%	100.48%	106.33%		102.29%	114.00%	102.73%	90.30%	94.32%	105.21%



（注）は、令和5年「機械統計年報」（2023年6月公表）により訂正のあったもの