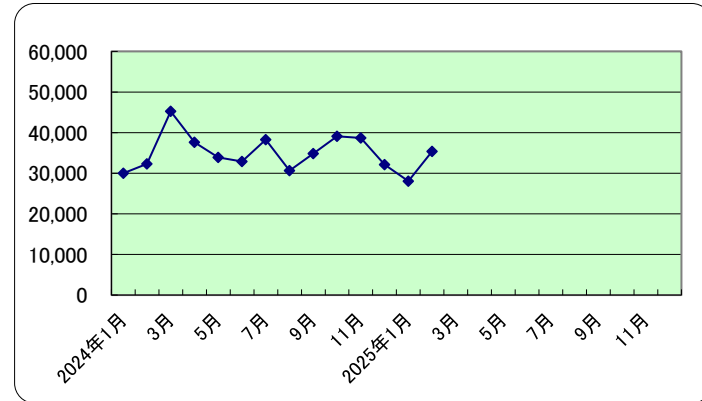
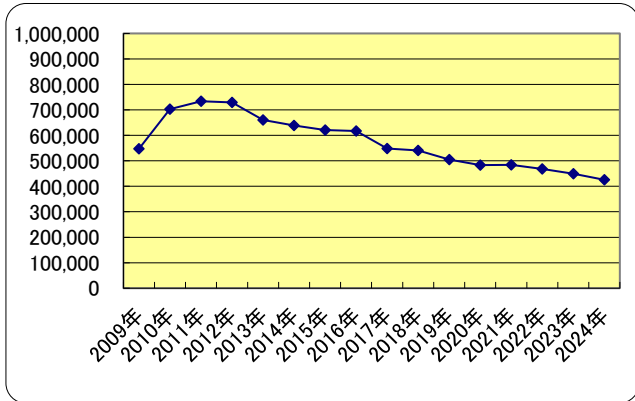


金型生産実績（数量）

「機械統計」出所:経済産業省

注)右欄は内製分(単位:組)

	プレス型		鍛造型		鋳造型		ダイカスト型		プラスチック型		ガラス型		ゴム型		粉末冶金型		合計	累計	
2009年	92,695	26,030	84,723	22,608	4,992	542	7,536	1,122	35,656	5,847	264,015	4,655	7,771	920	49,817	8,831	547,205	70,555	
2010年	124,494	25,866	119,956	30,188	5,101	764	8,521	1,619	39,325	6,082	335,987	2,600	8,649	833	61,258	10,883	703,291	78,835	
2011年	131,580	23,828	111,801	31,067	6,608	729	8,871	1,335	35,227	5,937	362,557		8,061	755	69,153	11,392	733,858	75,043	
2012年	127,886	26,565	142,281	32,705	6,404	691	9,265	1,411	37,216	6,592	330,052		7,990	665	67,801	12,499	728,895	81,128	
2013年	123,301	28,010	138,469	30,396	5,703	611	8,478	1,486	35,172	6,440	274,514		8,004	1,044	66,821	13,598	660,462	81,585	
2014年	120,536	26,997	141,519	31,097	5,013	644	8,161	1,747	37,426	6,785	253,350		6,687	869	65,791	13,123	638,483	81,262	
2015年	120,796	30,850	124,508	31,175	5,059	522	8,981	1,865	36,306	6,761	244,385		14,839	2,423	66,315	10,596	621,189	84,192	
2016年	114,552	28,338	120,314	33,012	5,127	577	9,258	2,244	41,307	6,550	249,292		15,430	2,725	61,984	9,357	617,264	82,803	
2017年	118,184	30,173	112,384	34,188	4,909	507	9,558	2,073	39,216	7,003	185,550		15,013	2,683	63,333	8,692	548,147	85,319	
2018年	109,872	32,155	112,684	33,973	5,221	580	8,483	1,999	32,093	6,130	190,188		15,467	2,367	67,136	7,956	541,144	85,160	
2019年	102,447	24,758	106,985	33,150	4,769	502	8,063	1,913	30,476	5,839	172,631		15,273	2,140	64,742	7,923	505,386	76,225	
2020年	85,476	23,896	76,116	24,076	3,989	513	6,734	1,480	29,686	5,367	215,153		12,043	1,760	54,246	6,116	483,443	63,208	
2021年	84,538	20,381	111,374	31,345	3,992	380	7,311	1,624	28,523	5,237	191,538		12,688	1,828	44,313	6,014	484,277	66,809	
2022年	89,722	25,782	111,131	32,686	3,589	395	7,153	1,549	27,679	4,885	183,533		12,353	1,456	32,927	4,667	468,087	71,420	
2023年	64,308	21,897	114,657	32,140	3,551	445	6,391	1,448	26,335	4,233	191,643		11,082	1,490	31,466	4,909	449,433	66,562	
2024年	54,775	18,542	112,478	31,167	3,208	380	5,589	1,400	25,894	4,189	183,250		10,309	1,369	30,100	4,408	425,603	61,455	
2024年1月	4,705	1,344	8,422	2,245	309	34	467	132	1,938	325	11,134		938	95	2,072	327	29,985	4,502	
2月	5,159	1,819	9,398	2,620	333	44	510	133	2,147	353	11,137		834	89	2,794	407	32,312	5,465	
3月	5,185	1,925	10,608	2,700	329	29	530	145	2,726	485	22,472		955	115	2,438	354	45,243	5,753	
4月	4,361	1,619	8,720	2,423	227	31	445	94	2,004	305	18,772		718	135	2,358	397	37,605	5,004	
5月	4,233	1,435	8,861	2,532	247	33	462	105	1,949	404	14,676		900	107	2,543	363	33,871	4,979	
6月	4,667	1,693	9,785	2,725	253	32	430	115	1,887	315	12,301		858	116	2,731	479	32,912	5,475	
7月	4,515	1,456	9,953	3,022	237	25	496	126	1,942	339	17,495		983	124	2,666	367	38,287	5,459	
8月	4,038	1,036	8,604	2,246	199	21	404	98	2,017	291	12,089		849	119	2,443	352	30,643	4,163	
9月	4,429	1,355	9,005	2,731	265	34	452	102	2,250	366	15,156		763	78	2,525	345	34,845	5,011	
10月	4,570	1,479	9,794	2,883	274	27	480	129	2,217	352	18,169		802	167	2,797	290	39,103	5,327	
11月	4,446	1,568	10,173	2,530	245	31	453	115	2,290	324	17,662		939	114	2,473	366	38,681	5,048	
12月	4,467	1,813	9,155	2,510	290	39	460	106	2,527	330	12,187		770	110	2,260	361	32,116	5,269	
2025年1月	3,473	1,294	9,144	2,313	284	16	434	100	1,957	307	9,419		1,015	134	2,329	385	28,055	4,549	
2月	3,687	1,269	10,232	2,508	305	44	473	110	1,946	250	15,444		934	132	2,370	366	35,391	4,679	
3月																		63,446	9,228
4月																			
5月																			
6月																			
7月																			
8月																			
9月																			
10月																			
11月																			
12月																			



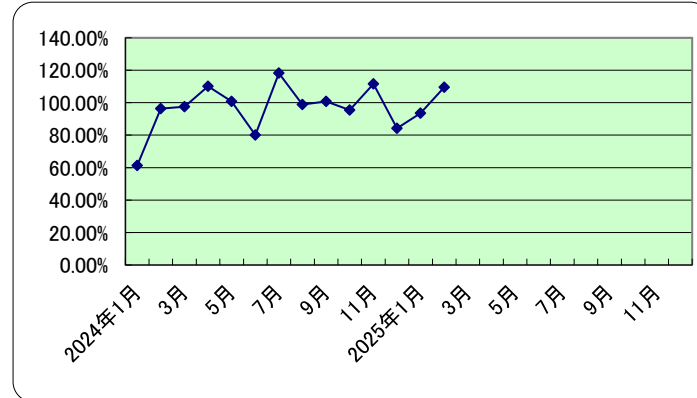
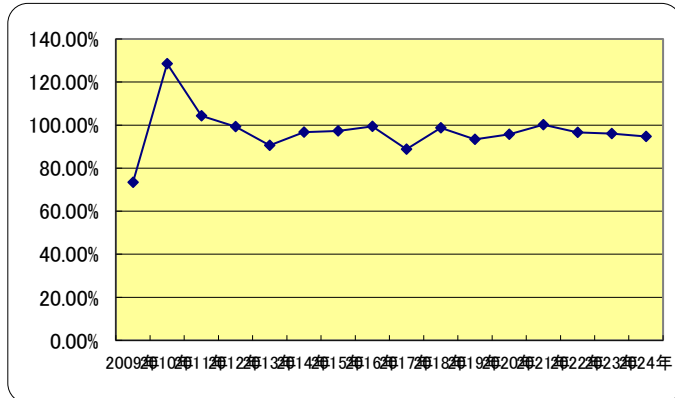
(注) は、令和6年「機械統計年報」(2024年6月公表)により訂正のあったもの

金型生産実績（数量）

「機械統計」（対前年比）

注）右欄は内製分（単位：％）

	プレス型		鍛造型		鋳造型		ダイカスト型		プラスチック型		ガラス型		ゴム型		粉末冶金型		合計		
2009年	61.41%	64.04%	57.76%	58.34%	67.87%	59.36%	74.19%	69.78%	74.99%	76.49%	89.36%	63.86%	78.03%	65.97%	62.95%	73.37%	67.34%		
2010年	134.30%	99.37%	141.59%	133.53%	102.18%	140.96%	113.07%	144.30%	110.29%	104.02%	127.26%	55.85%	111.30%	90.54%	122.97%	123.24%	128.52%	111.74%	
2011年	105.6%	92.12%	93.20%	102.91%	129.54%	95.42%	104.11%	82.46%	89.58%	97.62%	107.91%		93.20%	90.64%	112.89%	104.68%	104.35%	95.19%	
2012年	97.19%	111.49%	127.26%	105.27%	96.91%	94.79%	104.44%	105.69%	105.65%	111.03%	91.03%		99.12%	88.08%	98.04%	109.72%	99.32%	108.11%	
2013年	96.41%	105.44%	97.32%	92.94%	89.05%	88.42%	91.51%	105.32%	94.51%	97.69%	83.17%		100.18%	156.99%	98.55%	108.79%	90.61%	100.56%	
2014年	97.76%	96.38%	102.20%	102.31%	87.90%	105.40%	96.26%	117.56%	106.41%	105.36%	92.29%		83.55%	83.24%	98.46%	96.51%	96.67%	99.60%	
2015年	100.22%	114.27%	87.98%	100.25%	100.92%	81.06%	110.05%	106.75%	97.01%	99.65%	96.46%		221.91%	278.83%	100.80%	80.74%	97.29%	103.61%	
2016年	94.83%	91.86%	96.63%	105.89%	101.34%	110.54%	103.08%	120.32%	113.77%	96.88%	102.01%		103.98%	112.46%	93.47%	88.31%	99.37%	98.35%	
2017年	103.17%	106.48%	93.41%	103.56%	95.75%	87.87%	103.24%	92.38%	94.94%	106.92%	74.43%		97.30%	98.46%	102.18%	92.89%	88.80%	103.04%	
2018年	92.97%	106.57%	100.27%	99.37%	106.36%	114.40%	88.75%	96.43%	81.84%	87.53%	102.50%		103.02%	88.22%	106.00%	91.53%	98.72%	99.81%	
2019年	93.24%	77.00%	94.94%	97.58%	91.34%	86.55%	95.05%	95.70%	94.96%	95.25%	90.77%		98.75%	90.41%	96.43%	99.59%	93.39%	89.51%	
2020年	83.43%	96.52%	71.15%	72.63%	83.64%	102.19%	83.52%	77.37%	97.41%	91.92%	124.63%		78.85%	82.24%	83.79%	77.19%	95.66%	82.92%	
2021年	98.90%	85.29%	146.32%	130.19%	100.08%	74.07%	108.57%	109.73%	96.08%	97.58%	89.02%		105.36%	103.86%	81.69%	98.33%	100.17%	105.70%	
2022年	106.13%	126.50%	99.78%	104.28%	89.90%	103.95%	97.84%	95.38%	97.04%	93.28%	95.82%		97.36%	79.65%	74.31%	77.60%	96.66%	106.90%	
2023年	71.67%	84.93%	103.17%	98.33%	98.94%	112.66%	89.35%	93.48%	95.14%	86.65%	104.42%		89.71%	102.34%	95.56%	105.19%	96.01%	93.20%	
2024年	85.18%	84.68%	98.10%	96.97%	90.34%	85.39%	87.45%	96.69%	98.33%	98.96%	95.62%		93.02%	91.88%	95.66%	89.79%	94.70%	92.33%	
2024年1月	72.48%	66.04%	100.51%	97.78%	130.38%	106.25%	80.94%	118.92%	98.48%	113.64%	40.12%		108.31%	79.17%	78.07%	97.03%	61.29%	86.29%	
2月	94.94%	117.05%	96.58%	104.51%	111.37%	112.82%	97.70%	147.78%	101.56%	90.28%	93.72%		81.76%	85.58%	109.61%	107.67%	96.30%	107.94%	
3月	75.09%	102.18%	101.18%	95.44%	90.63%	54.72%	77.37%	94.77%	101.38%	108.50%	106.89%		86.58%	79.31%	78.57%	58.90%	97.60%	94.13%	
4月	83.69%	100.00%	99.17%	89.91%	79.37%	83.78%	83.18%	83.93%	95.79%	85.92%	136.74%		78.47%	123.85%	90.97%	82.37%	110.11%	92.51%	
5月	85.71%	80.03%	99.14%	104.11%	87.59%	173.68%	86.03%	85.37%	88.87%	132.03%	109.03%		112.22%	96.40%	102.75%	101.97%	100.73%	96.87%	
6月	98.13%	98.03%	98.82%	91.78%	87.85%	88.89%	77.20%	84.56%	62.57%	87.02%	63.09%		103.25%	86.57%	119.99%	134.93%	80.04%	95.73%	
7月	103.34%	94.18%	106.53%	109.22%	84.34%	62.50%	102.48%	129.90%	99.34%	79.76%	142.33%		110.20%	107.83%	95.83%	84.17%	118.18%	100.61%	
8月	80.86%	46.35%	92.61%	94.57%	99.00%	56.76%	84.34%	84.48%	110.82%	111.92%	110.47%		109.83%	103.48%	97.49%	89.57%	98.83%	75.27%	
9月	87.58%	100.52%	90.81%	103.21%	90.44%	68.00%	95.36%	79.69%	107.19%	105.78%	116.59%		85.92%	66.10%	88.32%	87.12%	100.75%	99.58%	
10月	91.88%	86.54%	97.84%	103.04%	85.09%	79.41%	89.39%	87.76%	109.16%	122.65%	93.77%		73.31%	91.76%	107.87%	65.32%	95.52%	95.11%	
11月	81.22%	74.00%	95.34%	83.53%	70.20%	119.23%	85.15%	92.74%	117.26%	93.91%	147.38%		85.75%	92.68%	95.23%	90.37%	111.62%	81.80%	
12月	78.31%	77.88%	99.51%	89.74%	82.86%	92.86%	97.46%	95.50%	105.07%	78.01%	72.96%		95.89%	96.49%	91.13%	110.74%	84.26%	85.80%	
2025年1月	73.82%	96.28%	108.57%	103.03%	91.91%	47.06%	92.93%	75.76%	100.98%	94.46%	84.60%		108.21%	141.05%	112.40%	117.74%	93.56%	101.04%	
2月	71.47%	69.76%	108.87%	95.73%	91.59%	100.00%	92.75%	82.71%	90.64%	70.82%	138.67%		111.99%	148.31%	84.82%	89.93%	109.53%	85.62%	
3月																			
4月																			
5月																			
6月																			
7月																			
8月																			
9月																			
10月																			
11月																			
12月																			



(注) は、令和6年「機械統計年報」（2024年6月公表）により訂正のあったもの