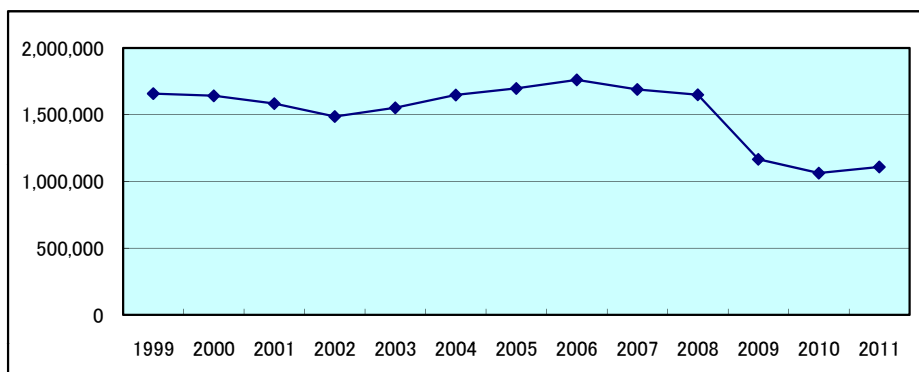


Production amount by each type of Dies and Molds
(Industrial Statistics)

(Unit: 1 million Yen)

	1999	2000	2001	2002	2003	2004	2005	2006	2007	2008	2009	2010	2011
Stamping die	550,253	535,675	520,459	517,096	543,667	576,174	588,447	619,299	588,478	579,971	416,934	357,865	358,677
Forging die	49,132	48,355	49,898	44,181	46,885	53,738	55,609	53,719	57,290	63,150	38,134	42,907	46,245
Casting molds													
Die casting die	123,513	113,005	116,396	108,935	103,381	107,483	121,271	128,588	117,965	114,527	71,960	70,962	80,947
Plastic molds	642,787	638,210	608,038	555,523	578,702	619,313	642,056	653,393	618,234	589,661	420,827	371,680	375,053
Glass molds/Rubber molds	59,886	59,468	55,817	52,666	49,425	49,565	51,387	52,165	48,456	48,556	38,287	34,435	40,196
Other type of Dies													
Molds and its	233,065	247,584	233,004	208,519	230,056	241,738	238,399	254,173	259,353	253,893	179,825	184,881	207,565
Total	1,658,636	1,642,297	1,583,612	1,486,920	1,552,116	1,648,011	1,697,169	1,761,337	1,689,776	1,649,758	1,165,967	1,062,730	1,108,683



Note: excluding enterprises having employees of less than 3

Note: This material uses the data from the 2012 economic census because the industrial statistics survey 2011 has not been conducted by METI. Industrial statistics survey 2012 will be carried out in the same manner as before.