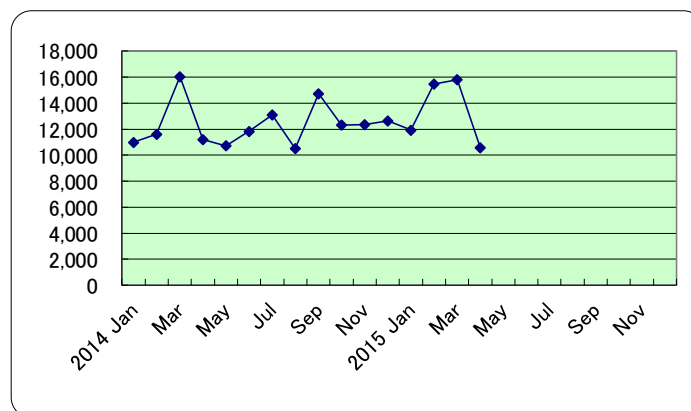
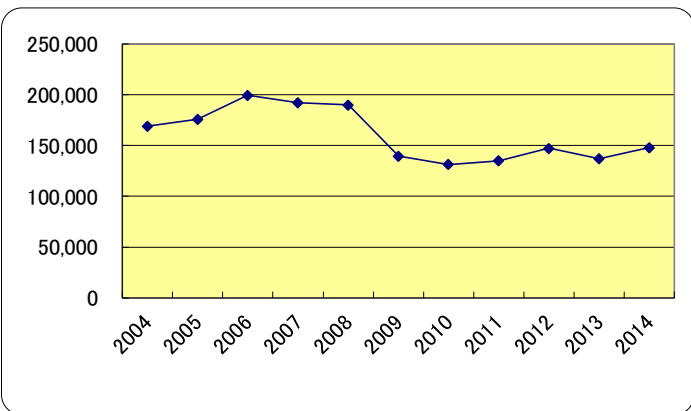


Production actual results (Weight(t))

「 Machinery Statistics 」 Ministry of Economy, Trade and Industry

(Unit:ton)

	Stamping die	Forging die	Casting molds	Die casting die	Plastic molds	Glassmolds	Rubber molds	Powdered metal molds	Total	Sum total	Note
2004	108,612	5,881	4,612	10,653	33,784	2,623	2,525	492	169,183		
2005	106,976	6,475	4,910	13,741	37,934	2,601	2,649	540	175,826		
2006	121,910	7,965	5,189	19,302	39,691	2,264	2,605	542	199,467		
2007	119,344	7,785	4,932	17,716	37,538	2,020	2,598	532	192,465		
2008	118,015	7,891	4,973	16,719	37,523	1,952	2,366	559	189,999		
2009	94,535	4,397	2,432	8,070	26,841	1,673	1,397	298	139,644		
2010	81,497	6,205	2,658	10,537	27,156	1,801	1,168	408	131,431		
2011	81,099	7,093	3,230	12,902	27,339	1,758	1,201	506	135,127		
2012	86,023	9,164	4,512	14,486	29,785	1,709	1,140	505	147,324		
2013	78,639	8,366	4,068	14,294	28,358	1,553	1,431	562	137,270		
2014	88,476	9,178	3,627	14,611	29,075	1,464	1,111	569	148,110		
2011	85,055	7,919	3,492	13,505	28,123	1,715	1,207	503	141,520		
2012	83,310	8,566	4,433	14,248	29,353	1,694	1,165	514	143,284		
2013	81,355	9,000	3,904	14,206	29,008	1,540	1,376	578	140,969		
2014 Jan	6,455	764	200	1,171	2,170	115	81	40	10,996		
Feb	6,835	809	360	1,101	2,243	135	91	48	11,623	22,619	
Mar	10,061	865	353	1,424	3,086	133	65	56	16,043	38,662	
Apr	6,539	709	306	1,020	2,373	119	97	44	11,207	49,869	
May	5,933	734	240	1,156	2,411	119	85	50	10,728	60,597	
Jun	7,148	691	252	1,055	2,435	121	95	46	11,844	72,441	
Jul	7,902	753	341	1,306	2,507	134	110	46	13,100	85,541	
Aug	5,778	723	304	1,130	2,328	111	102	40	10,514	96,055	
Sep	9,963	757	319	1,252	2,153	114	112	61	14,730	110,785	
Oct	7,315	815	336	1,257	2,364	106	95	44	12,331	123,116	
Nov	7,331	784	362	1,229	2,385	127	94	49	12,361	135,477	
Dec	7,216	774	255	1,510	2,620	129	84	44	12,632	148,110	
2015 Jan	6,668	692	241	1,543	2,564	95	102	32	11,938		
Feb	9,785	779	258	1,561	2,818	126	121	41	15,489	27,427	
Mar	9,151	795	358	2,256	2,995	99	122	45	15,820	43,247	
Apr	5,068	732	283	1,683	2,511	115	147	41	10,579	53,826	
May											
Jun											
Jul											
Aug											
Sep											
Oct											
Nov											
Dec											



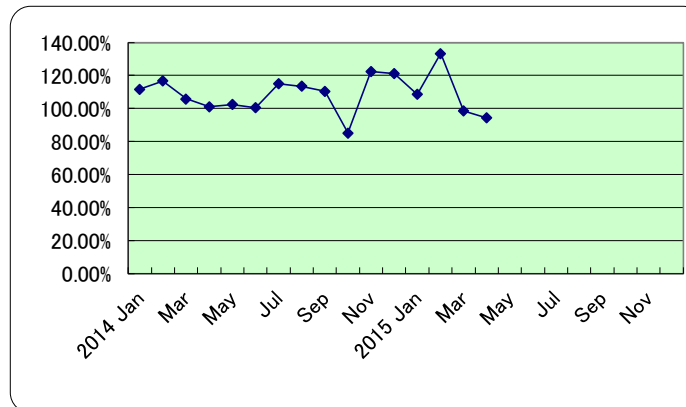
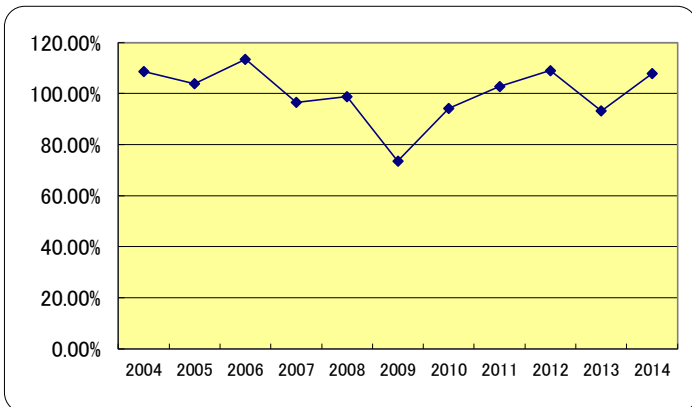
This statistics a revised edition

Production actual results (Weight(t))

「 Machinery Statistics 」

(Unit:%)

	Stamping die	Forging die	Casting molds	Die casting die	Plastic molds	Glassmolds	Rubber molds	Powdered metal	Total
2004	114.58%	107.08%	86.06%	103.59%	99.22%	96.01%	102.64%	88.33%	108.65%
2005	98.49%	110.10%	106.46%	128.99%	112.28%	99.16%	104.91%	109.76%	103.93%
2006	113.96%	123.01%	105.68%	140.47%	104.63%	87.04%	98.34%	100.37%	113.45%
2007	97.90%	97.74%	95.05%	91.78%	94.58%	89.22%	99.73%	98.15%	96.49%
2008	98.89%	101.36%	100.83%	94.37%	99.96%	96.63%	91.07%	105.08%	98.72%
2009	80.10%	55.72%	48.90%	48.27%	71.53%	85.71%	59.04%	53.31%	73.50%
2010	86.21%	141.12%	109.29%	130.57%	101.17%	107.65%	83.61%	136.91%	94.12%
2011	99.51%	114.31%	121.52%	122.44%	100.67%	97.61%	102.83%	124.02%	102.81%
2012	106.07%	129.20%	139.69%	112.28%	108.95%	97.21%	94.92%	99.80%	109.03%
2013	91.42%	91.29%	90.16%	98.67%	95.21%	90.87%	125.53%	111.29%	93.18%
2014	112.51%	109.71%	89.16%	102.22%	102.53%	94.27%	77.64%	101.25%	107.90%
2011	106.82%	126.04%	126.48%	119.78%	104.74%	93.00%	107.38%	114.06%	108.69%
2012	97.95%	108.17%	126.95%	105.50%	104.37%	98.78%	96.52%	102.19%	101.25%
2013	97.65%	105.07%	88.07%	99.71%	98.82%	90.91%	118.11%	112.45%	98.38%
2014 Jan	115.62%	140.44%	69.93%	105.21%	103.78%	102.68%	91.01%	121.21%	111.62%
Feb	124.93%	128.62%	115.38%	91.75%	108.78%	97.83%	91.00%	111.63%	116.74%
Mar	105.02%	136.87%	73.85%	96.80%	114.42%	91.72%	62.50%	109.80%	105.84%
Apr	99.39%	114.17%	95.63%	95.06%	107.18%	87.50%	90.65%	97.78%	101.01%
May	103.18%	115.41%	78.69%	115.02%	97.57%	92.97%	73.28%	96.15%	102.52%
Jun	105.37%	101.47%	91.97%	84.33%	98.26%	87.68%	73.08%	100.00%	100.53%
Jul	129.86%	99.60%	66.21%	106.61%	100.84%	102.29%	83.33%	97.87%	115.13%
Aug	123.30%	109.55%	97.12%	111.55%	102.24%	94.07%	69.39%	75.47%	113.47%
Sep	122.35%	102.85%	106.33%	90.53%	87.20%	85.71%	92.56%	115.09%	110.43%
Oct	75.59%	99.39%	96.00%	111.14%	107.02%	95.50%	70.90%	95.65%	85.17%
Nov	149.77%	93.22%	132.12%	100.16%	93.97%	93.38%	72.31%	104.26%	122.53%
Dec	133.51%	95.44%	75.00%	125.62%	110.69%	102.38%	68.85%	97.78%	121.25%
2015 Jan	103.30%	90.58%	120.50%	131.77%	118.16%	82.61%	125.93%	80.00%	108.57%
Feb	143.16%	96.29%	71.67%	141.78%	125.64%	93.33%	132.97%	85.42%	133.26%
Mar	90.96%	91.91%	101.42%	158.43%	97.05%	74.44%	187.69%	80.36%	98.61%
Apr	77.50%	103.24%	92.48%	165.00%	105.82%	96.64%	151.55%	93.18%	94.40%
May									
Jun									
Jul									
Aug									
Sep									
Oct									
Nov									
Dec									



This statistics a revised edition